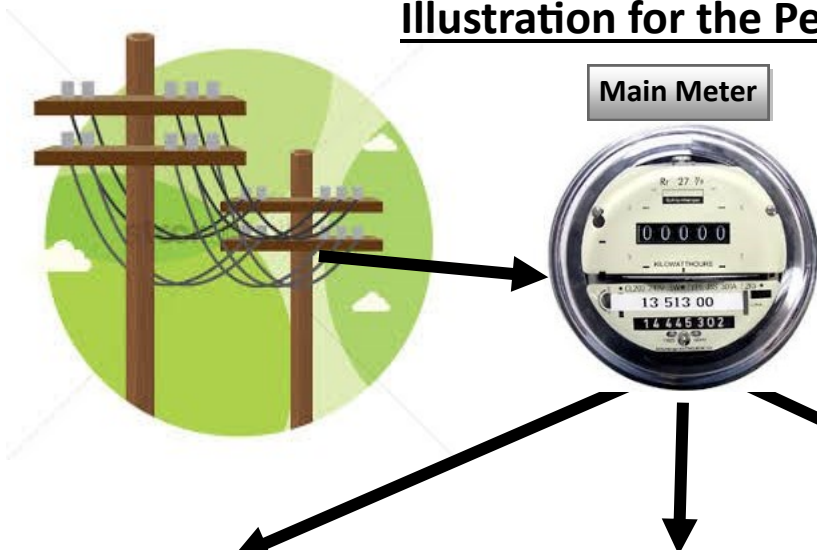


Main Meter with Multiple Transformers Installation

Illustration for the Peak Energy Saver



Where do I install Peak Energy Savers?

The Peak Energy Saver installs at each transformer (after the meter) with a dedicated 2 pole 15 amp breaker. As a result, the Peak Energy Saver runs in parallel with everything connected to that transformer and any sub-panels downline from the transformer.



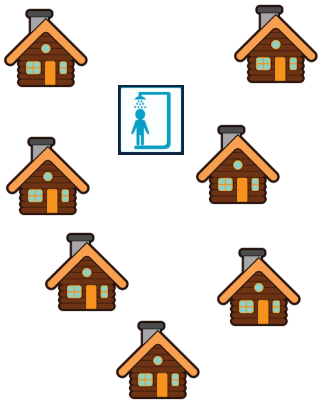
One transformer operates multiple pedestals feeding 10 RV sites, 6 cabins and sewer pump.



One transformer feeds Office, camp store pool, clubhouse, hot tub laundry and bathhouse.



One transformer feeds 8 RV Sites, 5 park homes and water fountain.



See video demo at www.peakenergytech.com

For information, please call 888-613-7775